

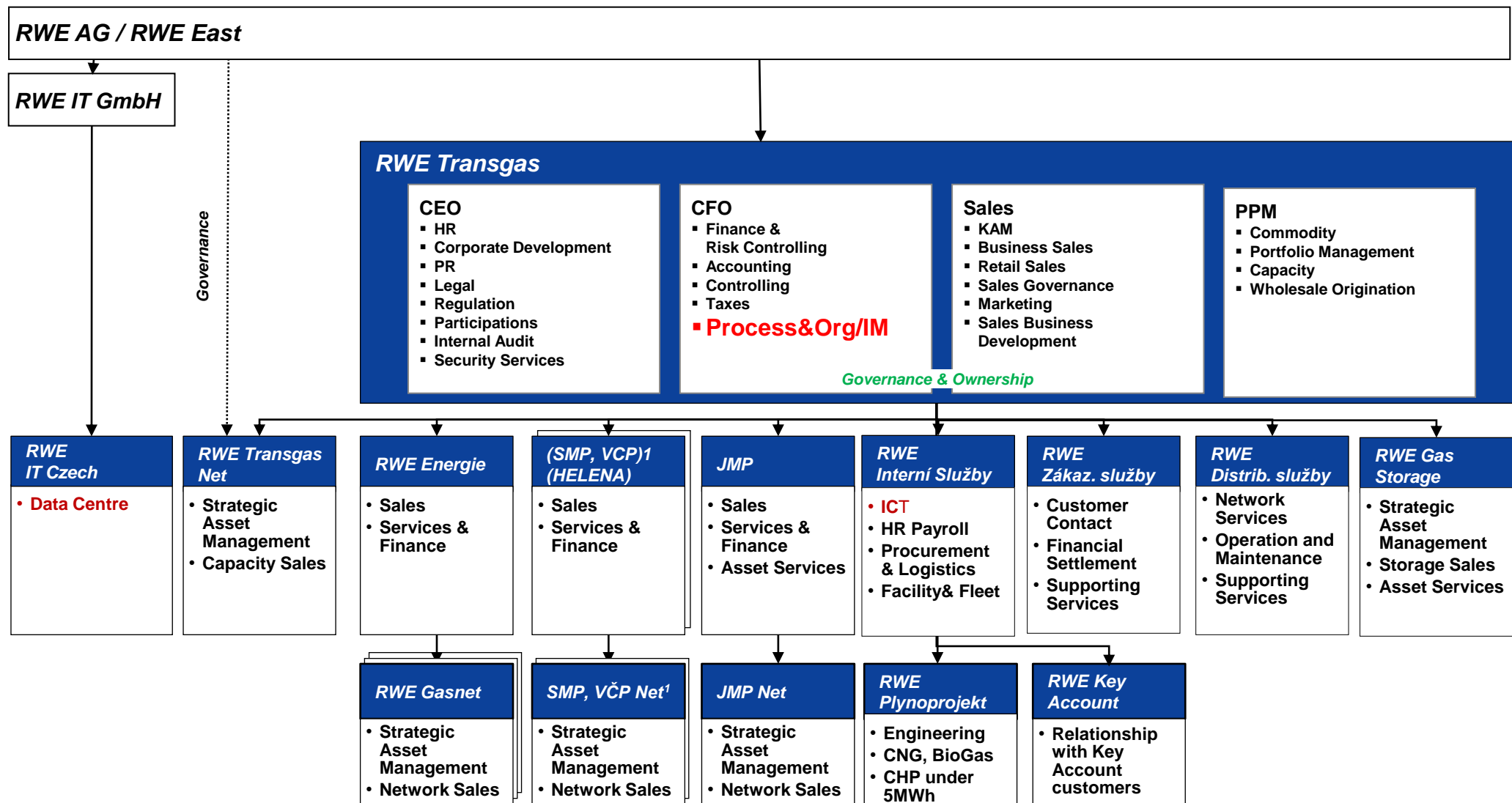


Vision of Enterprise Architecture in RWE CZ group

František Zuzák, Information Management, RWE Transgas
Systémová Integrace 2011, Palác Žofín, Praha, 6.6.2011



Current organizational structure of RWE Group CZ



Context of Enterprise Architecture within RWE Group CZ

- > **RWE East** as new regional level of IT governance (CZ, PL, SK, HU, TK)
- > Change of **RWE IS** (Interní služby) to pure ICT vendor of RWE ČR with planned integration with RWE IT CZ and introduction of IT architecture function
- > Increasing number of **strategic projects** with important impacts into IT landscape and business/system integration
- > Rollout of **application change management** process, nomination of application mentors as business owners
- > New dedicated department/team for **Information Management** established within POIM (Process & Organization / Information Management) responsible for ICT governance including **Enterprise Architecture**
- > **Process & Organization** department/team already well established within POIM and gives solid base of business architecture

Pragmatic Enterprise Architecture practice within RWE CZ as change quality assurance within governance functions

> **POIM division**

(Process & Organization / Information Management)
reporting to CFO (Member of Board),
serves all companies in RWE CZ
and is organizationally placed
in RWE Transgas

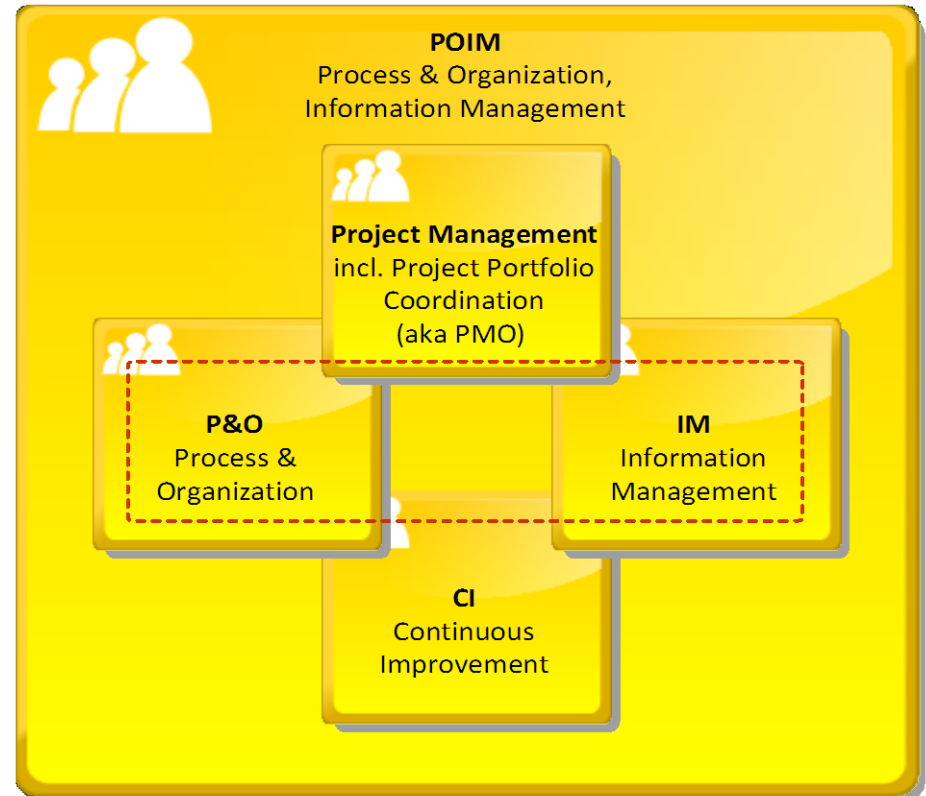
> **Information Management**

is responsible for IT viewpoint
of Enterprise Architecture and
ICT Governance at all

> **Process & Organization**

is responsible for BPM, SLM

> **PMO** assures change delivery (top down) and **CI** as well (bottom up), project managers are domain experts (aka domain architects) used to fulfill EA function

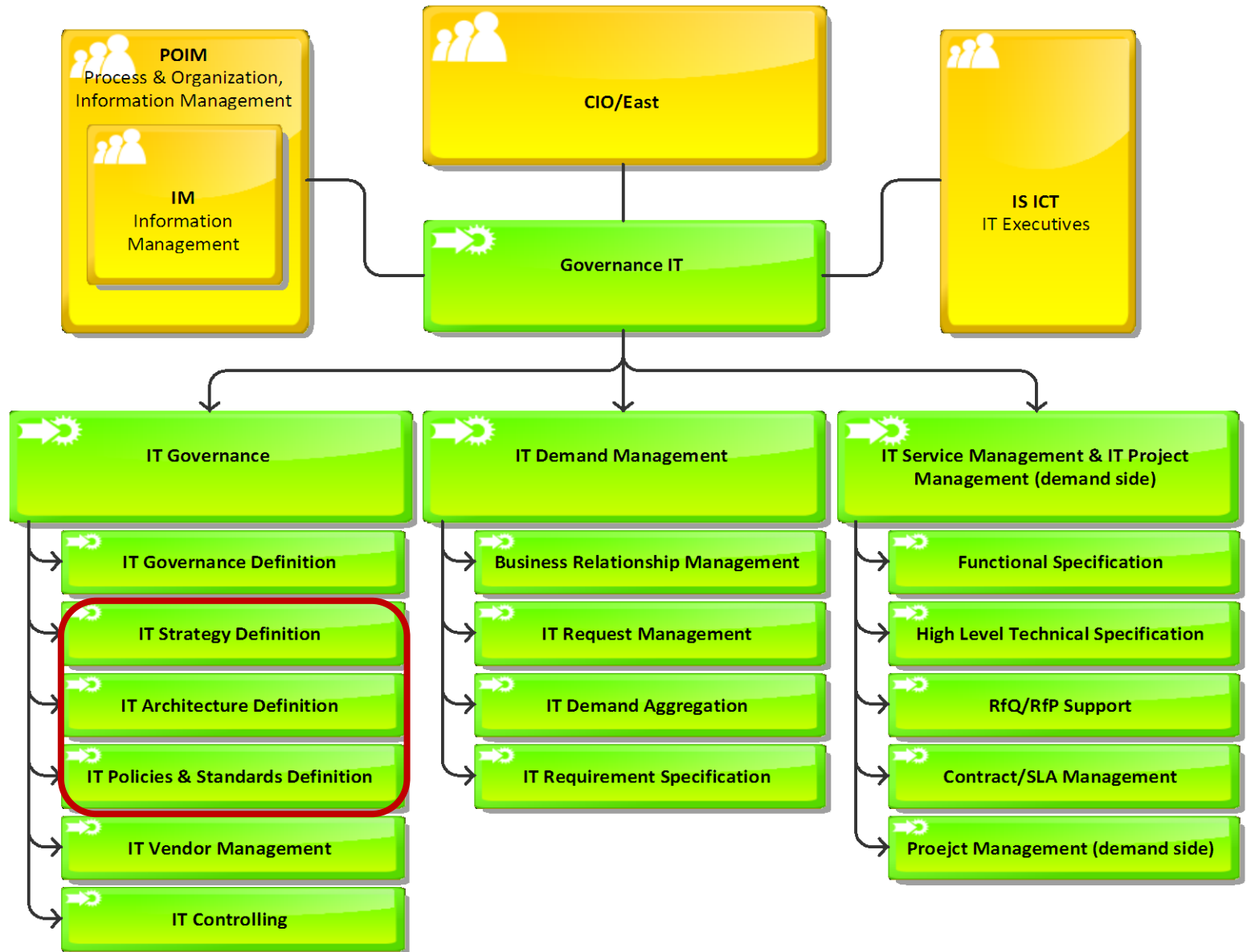


ICT Governance: Responsibilities of Information Management

Role description

- Responsible for overall ICT budget
- Fosters communication with RWE East / RWE IT CIO
- Responsible for ICT reporting
- Watches technology development
- **Definition of ICT strategy & target architecture on RWE CZ level**
- Manages relationship of business & ICT:
 - Collects and approves business requirements
 - Initiates new projects / change requests to current services
- Manages ICT programs & projects
 - Coordinates project initiation
 - Takes part in vendor selection for large project deliveries
 - **Sets target architecture and SW products**
 - Checks project progress
 - Approves project deliverables and budgets
- ICT service management
- Based on **RWE Group standards sets RWE CZ ICT standards** and approves exceptions

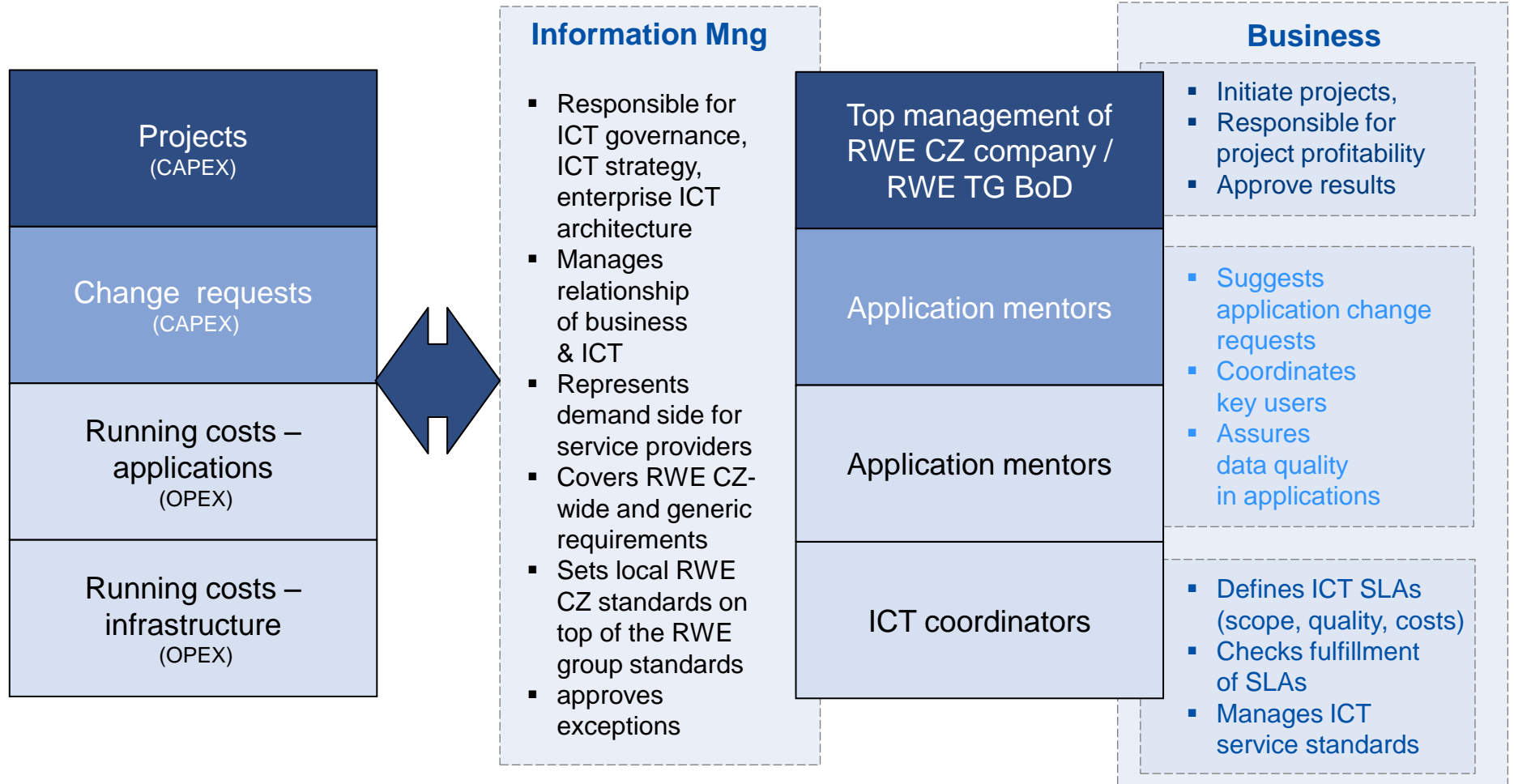
Process View on ICT governance and fit of architecture



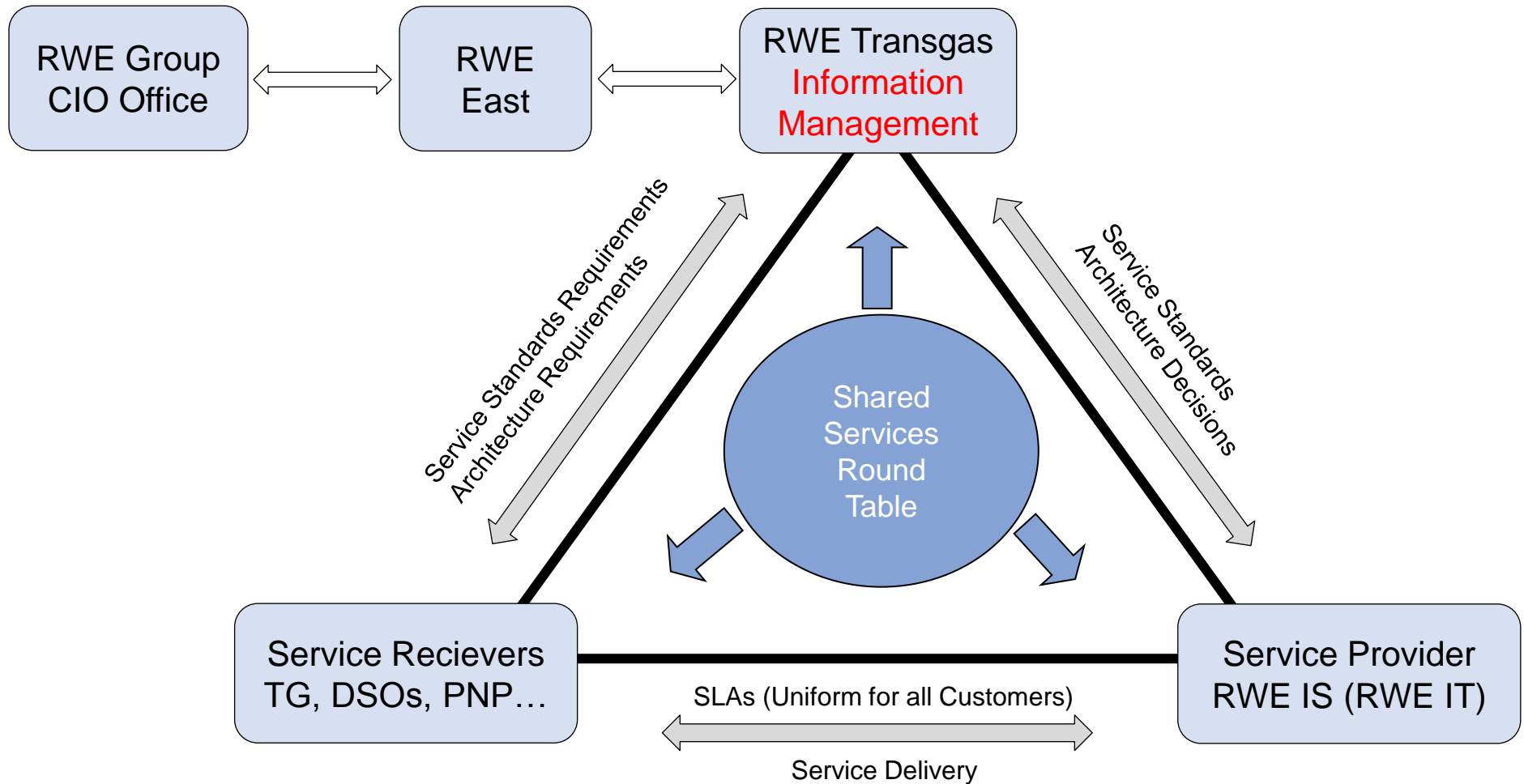
Demand side model of ICT governance

- Structure of ICT expenditures -

- Structure of ICT governance (demand side) -



Governance role to ensure consolidated, unified approach of all ICT consumers towards internal ICT supplier



RWE Group CZ vision is to build pragmatic EA practice on demand side within governance functions

- > **Build coherent team:** tiny core team within POIM as base for virtual EA team, shared knowledge, not to become bottleneck (combo: PM & domain expert)
- > **Assure best practice,** but not to be misused: frameworks are great but still just frameworks, use common sense, understandable for non-architects as well
- > **Keep pragmatic approach:** less is often more, communicate, communicate, communicate, apply synergies and do not compete with delivery side (IT architects)
- > **Deliver quick wins:** to show the value of EA and ICT governance
 - implement application change management process with tool support
 - issue book of ICT standards and policies (to be used in tenders consistently)
 - define development roadmaps in major domains such as CRM, billing, BI, DMS...

Thank you...

